

\$575,000 - 32137 Donnas Ln, Frankford

MLS® #DESU2067640

\$575,000

3 Bedroom, 2.00 Bathroom, 2,082 sqft
Single Family on 1 Acres

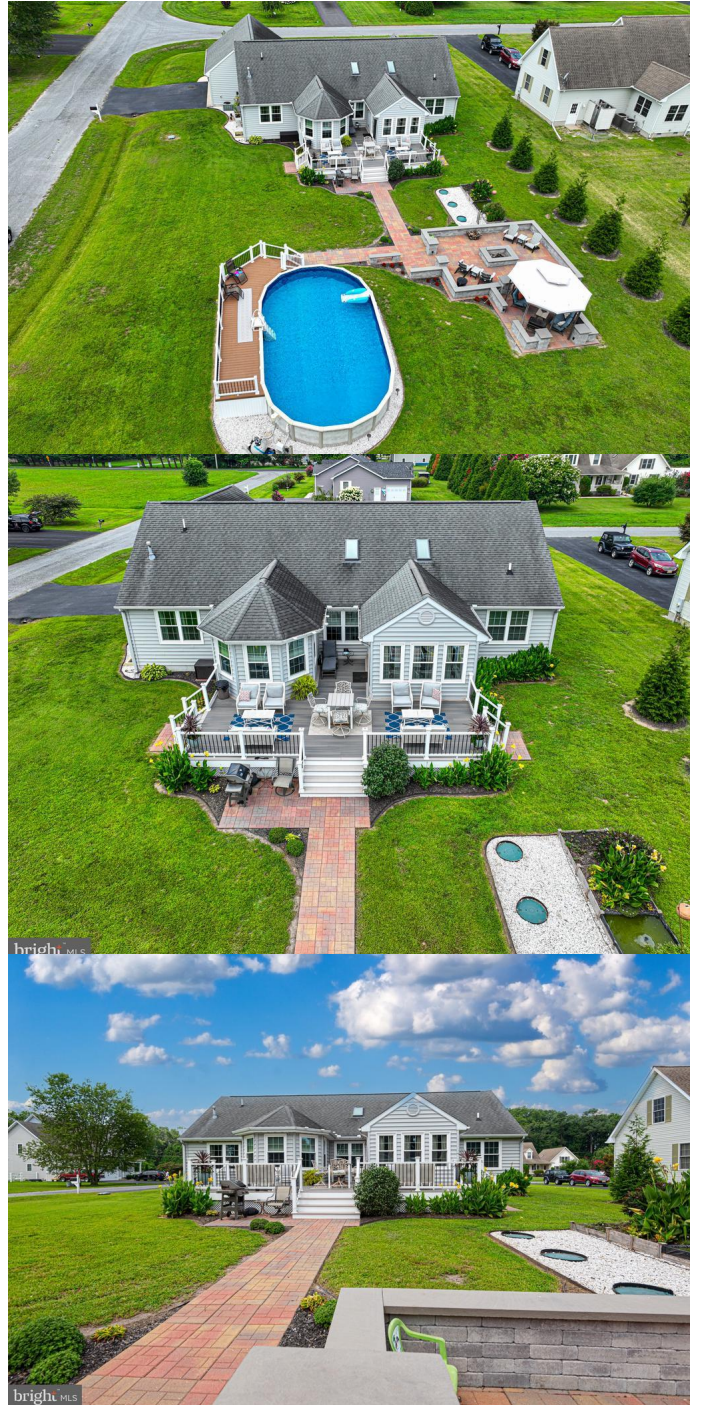
HARMONY HEIGHTS, Frankford, DE

Beautifully maintained and upgraded ranch home located just a short drive to the beach. This home has lots of beautiful upgrades both interior and exterior. The interior includes 3 bedrooms, 2 baths, LVP flooring and granite counter tops, and new tiled shower. The exterior includes a newly added deck, substantial hardscaping with firepit and gazebo, an above ground salt water pool and an amazing extra building for entertaining that houses the pool table and bar! The pool league can practice any night they want! Sold unfurnished but pool room contents are negotiable. All of this located on .66 acres and 15 minutes to Bethany Beach!

Built in 2005

Essential Information

| | |
|----------------|---------------|
| MLS® # | DESU2067640 |
| Price | \$575,000 |
| Bedrooms | 3 |
| Bathrooms | 2.00 |
| Full Baths | 2 |
| Square Footage | 2,082 |
| Acres | 0.66 |
| Year Built | 2005 |
| Type | Single Family |
| Sub-Type | Detached |
| Style | Rancher |
| Status | Active |



Tax Year 2024
Annual Tax Amount \$1,051

Community Information

Address 32137 Donnas Ln
Area Baltimore Hundred (31001)
Subdivision HARMONY HEIGHTS
City Frankford
County SUSSEX-DE
State DE
Zip Code 19945
Sussex Delaware Quadrant Between Rt 1 & 113

Amenities

Amenities Attic, Carpet, Ceiling Fan(s), Entry Lvl BR, Soaking Tub
Utilities Cable TV Available, Phone Available, Propane
Parking Paved Parking, Private
of Garages 2
Garages Garage - Side Entry
Has Pool Yes
Pool Above Ground, Saltwater

Interior

Interior Features Floor Plan-Open
Appliances Built-In Microwave, Dishwasher, Disposal, Oven/Range-Gas, Refrigerator, Washer, Water Heater, Dryer - Electric
Heating Forced Air
Cooling Central A/C, Ceiling Fan(s)
Fireplace Yes
of Fireplaces 1
Fireplaces Gas/Propane
of Stories 1
Stories 1 Story

Exterior

Exterior Vinyl Siding
Exterior Features Outbuilding Apartment, Deck(s), Porch(es), Gutter System
Lot Description Corner Lot, Front Yard, Landscaping, Rear Yard, Side Yard(s), Cleared
Windows Energy Efficient, Double Hung

| | |
|------------|-----------------------|
| Roof | Architectural Shingle |
| Foundation | Block |

School Information

| | |
|----------|--------------|
| District | INDIAN RIVER |
|----------|--------------|

Additional Information

| | |
|----------------|------------------|
| Date Listed | August 1st, 2024 |
| Days on Market | 24 |
| Zoning | AR-1 |

Listing Details

| | |
|----------------|------------------------------|
| Listing Office | Patterson-Schwartz-OceanView |
|----------------|------------------------------|

©2024 BRIGHT, All Rights Reserved. Information deemed reliable but not guaranteed. The data relating to real estate for sale on this website appears in part through the BRIGHT Internet Data Exchange program, a voluntary cooperative exchange of property listing data between licensed real estate brokerage firms in which Long & Foster Bethany Beach participates, and is provided by BRIGHT through a licensing agreement. Real estate listings held by brokerage firms other than Long & Foster Bethany Beach are marked with the IDX logo and detailed information about each listing includes the name of the listing broker. The information provided by this website is for the personal, non-commercial use of consumers and may not be used for any purpose other than to identify prospective properties consumers may be interested in purchasing. Some properties which appear for sale on this website may no longer be available because they are under contract, have Closed or are no longer being offered for sale. Some real estate firms do not participate in IDX and their listings do not appear on this website. Some properties listed with participating firms do not appear on this website at the request of the seller.

Listing information last updated on August 24th, 2024 at 4:16pm EDT