

# \$789,900 - 34515 Scenic Harbor Way, Lewes

MLS® #DESU2066042

## \$789,900

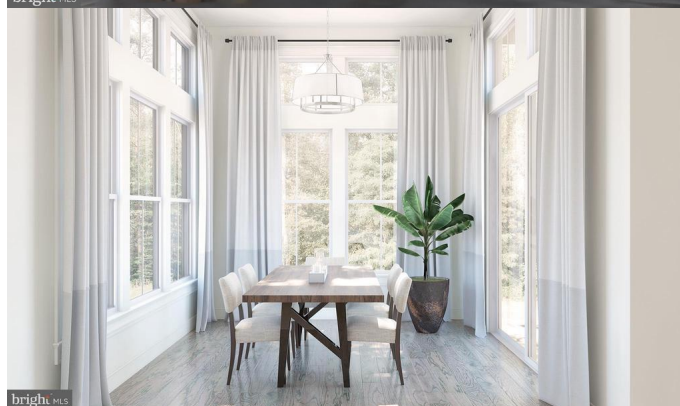
4 Bedroom, 3.50 Bathroom, 3,570 sqft  
Single Family on 0 Acres

FOUR SEASONS AT SCENIC HARBOR, Lewes, DE

Come visit our brand new active adult community, Four Seasons at Scenic Harbor. This community will feature all single family homes and tons of planned amenities to keep you are busy as youâ€™d like to be in retirement. The community will have a 7,000 sq. ft. clubhouse, 3 pickleball courts, bocce court, outdoor pool & spa, and more. This location is gorgeous tucked away off Mulberry Knoll Rd â€” a private, serene setting close to Arnell Creek and Rehoboth Bay.

Welcome to the Munich home design. This home is currently in the process of construction and is scheduled to be completed by Fall 2024.

The popular model features a combination of open living space paired with traditional elements. This home features 4 bedrooms, 3.5 baths and a 2 car garage. Structural Features added to this home include a screen porch, a great room fireplace with stone, and an upgraded shower in the primary bath which features a shower with tile to the ceiling and frameless shower door. In the well-appointed kitchen, you will find light brown shaker style cabinets, stainless steel appliances, quartz countertops as well as a large island, gas cooking and pendant lighting to complete the look. Other spaces to note in this home are the home office with barn doors which provides privacy while working on projects as home and an in law suite on the first floor.



Designer features of this home include Mohawk® RevWood laminate flooring in the foyer, home office, kitchen, great room and owners suite. Tile bath surrounds and tile floors in all baths, plus

ceiling beams to accent the home's tall ceilings. To schedule a tour please and to receive a full brochure of all the features in this home please contact our sales representatives

### **Essential Information**

MLS® #	DESU2066042
Price	\$789,900
Bedrooms	4
Bathrooms	3.50
Full Baths	3
Half Baths	1
Square Footage	3,570
Acres	0.18
Type	Single Family
Sub-Type	Detached
Style	Rancher
Status	Active

### **Community Information**

Address	34515 Scenic Harbor Way
Area	Lewes Rehoboth Hundred (31009)
Subdivision	FOUR SEASONS AT SCENIC HARBOR
City	Lewes
County	SUSSEX-DE
State	DE
Zip Code	19958
Sussex Delaware Quadrant	Between Rt 1 & 113

### **Amenities**

# of Garages	3
--------------	---

Garages	Garage - Front Entry
Has Pool	Yes

### **Interior**

Heating	90% Forced Air
Cooling	Central A/C
Fireplace	Yes
# of Fireplaces	1
# of Stories	2
Stories	2 Story

### **Exterior**

Exterior	Concrete/Block, Vinyl Siding
Foundation	Concrete Perimeter, Crawl Space

### **School Information**

District	CAPE HENLOPEN
----------	---------------

### **Additional Information**

Date Listed	July 8th, 2024
Days on Market	48
Zoning	RESIDENTIAL
HOA Fees	275.00
HOA Fees Freq.	Monthly

### **Listing Details**

Listing Office	Delaware Homes Inc
----------------	--------------------

©2024 BRIGHT, All Rights Reserved. Information deemed reliable but not guaranteed. The data relating to real estate for sale on this website appears in part through the BRIGHT Internet Data Exchange program, a voluntary cooperative exchange of property listing data between licensed real estate brokerage firms in which Long & Foster Bethany Beach participates, and is provided by BRIGHT through a licensing agreement. Real estate listings held by brokerage firms other than Long & Foster Bethany Beach are marked with the IDX logo and detailed information about each listing includes the name of the listing broker. The information provided by this website is for the personal, non-commercial use of consumers and may not be used for any purpose other than to identify prospective properties consumers may be interested in purchasing. Some properties which appear for sale on this website may no longer be available because they are under contract, have Closed or are no longer being offered for sale. Some real estate firms do not participate in IDX and their listings do not appear on this website. Some properties listed with participating firms do not appear on this website at the request of the seller.

Listing information last updated on August 24th, 2024 at 2:45pm EDT