

# \$649,900 - 20436 Skipjack Dr, Lewes

MLS® #DESU2066022

## \$649,900

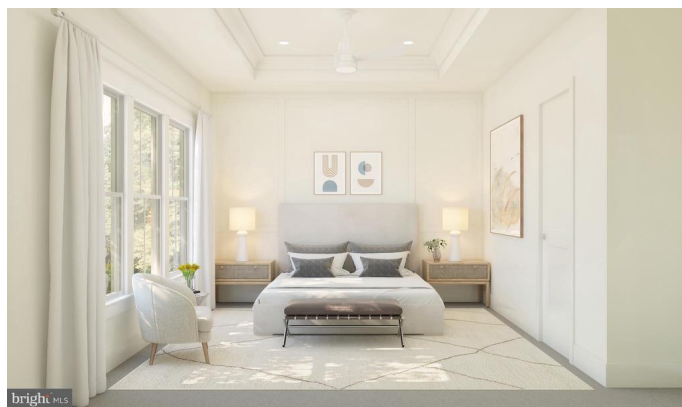
2 Bedroom, 2.50 Bathroom, 2,041 sqft  
Single Family on 0 Acres

FOUR SEASONS AT SCENIC HARBOR, Lewes, DE

Come visit our brand new active adult community, Four Seasons at Scenic Harbor. This community will feature all single-family homes and tons of planned amenities to keep you as busy as you™d like to be in retirement. The community will have a 7,000 sq. ft. clubhouse, 3 pickleball courts, a bocce court, an outdoor pool & spa, and more. This location is gorgeous tucked away off Mulberry Knoll Rd – a private, serene setting close to Arnell Creek and Rehoboth Bay.

Welcome to the Taylor home design. This home is currently in the process of construction and is scheduled to be completed by Summer 2024. The popular model features a combination of open living spaces paired with traditional elements. This home features 2 bedrooms, 2.5 baths, and a tandem 3-car garage. Structural Features added to this home include a screen porch, a great room fireplace with a shiplap accent, stained beams in the vaulted main area, and an upgraded shower in the primary bath which features a shower with tile to the ceiling and frameless shower door. In the well-appointed kitchen, you will find white shaker-style cabinets, stainless steel appliances, quartz countertops, a large island, gas cooking, and pendant lighting to complete the look. Other spaces to note in this home are the home office with barn doors which provides privacy while working on projects at home.

Designer features of this home include plank



laminated in the foyer, home office, kitchen, great room, and owner's suite. Tile bath surrounds and tile floors in all baths, plus accent ceiling beams. To schedule a tour please and to receive a full brochure of all the features in this home please contact our sales representatives. Onsite unlicensed sales agent represents the builder. Pictures are from another home and may not accurately represent this home.

Built in 2024

### Essential Information

MLS® #	DESU2066022
Price	\$649,900
Bedrooms	2
Bathrooms	2.50
Full Baths	2
Half Baths	1
Square Footage	2,041
Acres	0.19
Year Built	2024
Type	Single Family
Sub-Type	Detached
Style	Rancher
Status	Active
Annual Tax Amount	\$2,500

### Community Information

Address	20436 Skipjack Dr
Area	Lewes Rehoboth Hundred (31009)
Subdivision	FOUR SEASONS AT SCENIC HARBOR
City	Lewes
County	SUSSEX-DE
State	DE
Zip Code	19958
Sussex Delaware Quadrant	Between Rt 1 & 113

### Amenities

Amenities	Built-Ins, Entry Lvl BR, Master Bath(s), Tub Shower, Upgraded Countertops, Walk-in Closet(s)
Utilities	Under Ground
# of Garages	3
Garages	Garage - Front Entry
Has Pool	Yes

### **Interior**

Interior Features	Floor Plan-Open
Appliances	Disposal, Energy Star Appliances, ENERGY STAR Dishwasher, ENERGY STAR Refrigerator, Exhaust Fan, Icemaker, Microwave, Oven-Wall, Oven/Range-Gas, Range hood, Refrigerator, Stainless Steel Appliances, Water Heater - Tankless
Heating	Forced Air, Central
Cooling	Central A/C
Fireplace	Yes
# of Fireplaces	1
Fireplaces	Gas/Propane, Mantel(s)
# of Stories	1
Stories	1 Story

### **Exterior**

Exterior	Concrete/Block, Frame
Exterior Features	Porch(es)
Lot Description	Front Yard, Landscaping, Level, Open, Rear Yard, SideYard(s)
Windows	Double Pane, ENERGY STAR Qualified, Low-E, Screens
Roof	Architectural Shingle
Foundation	Concrete Perimeter, Crawl Space

### **School Information**

District	CAPE HENLOPEN
----------	---------------

### **Additional Information**

Date Listed	July 9th, 2024
Days on Market	14
Zoning	RESIDENTIAL
HOA Fees	275.00
HOA Fees Freq.	Monthly

### **Listing Details**

©2024 BRIGHT, All Rights Reserved. Information deemed reliable but not guaranteed. The data relating to real estate for sale on this website appears in part through the BRIGHT Internet Data Exchange program, a voluntary cooperative exchange of property listing data between licensed real estate brokerage firms in which Long & Foster Bethany Beach participates, and is provided by BRIGHT through a licensing agreement. Real estate listings held by brokerage firms other than Long & Foster Bethany Beach are marked with the IDX logo and detailed information about each listing includes the name of the listing broker. The information provided by this website is for the personal, non-commercial use of consumers and may not be used for any purpose other than to identify prospective properties consumers may be interested in purchasing. Some properties which appear for sale on this website may no longer be available because they are under contract, have Closed or are no longer being offered for sale. Some real estate firms do not participate in IDX and their listings do not appear on this website. Some properties listed with participating firms do not appear on this website at the request of the seller.

Listing information last updated on July 22nd, 2024 at 11:31am EDT