

\$589,000 - 31680 Grenache Ct #46, Lewes

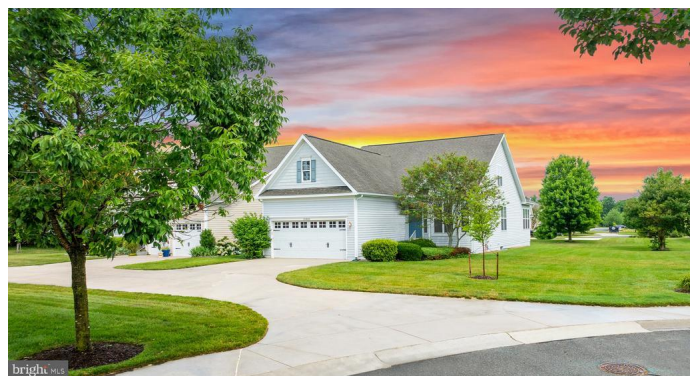
MLS® #DESU2065952

\$589,000

3 Bedroom, 3.00 Bathroom, 2,400 sqft
Single Family on 0 Acres

NASSAU GROVE, Lewes, DE

Welcome to this peaceful 3-bedroom, 3-bathroom home at 31680 Grenache Ct. in Nassau Grove boasting an impressive 2400 sq ft of living space. This home, a new listing available for sale, is designed with a thoughtful open floor plan that enhances the flow between living spaces, making it perfect for family gatherings and entertainment. The first level features a primary suite that guarantees privacy and comfort, equipped with modern amenities. The heart of the home, the great room, opens seamlessly into a spacious living area accentuated by vaulted ceilings that contribute to the airiness of the room. Additional living space is provided upstairs with loft living area, full bath and bedroom, ideal for guests or home office. Experience relaxation in the sunroom or entertain guests in the large screened porch, both perfect settings for enjoying tranquil views and sunsets that this location offers. A practical basement area offers additional storage solutions or could be finished for extra living space. Not just a beautiful home, this property is part of a vibrant community that includes lawn maintenance, irrigation, and exceptional amenities.. Residents can enjoy a 6,000 sq ft clubhouse, scenic ponds accompanied by walking paths, and exclusive community access to the Lewes-Georgetown Trail for walking and biking.. This residence provides extra parking space, ensuring convenience for homeowners and their guests. The locale of this home is especially appealing with its close



proximity to essential shopping and dining options, Lewes Beach, and engaging attractions like Cape Henlopen State Park and the historical Lewes area. Whether it's exploring local history or enjoying a day at the beach, everything you need is just a short drive away. This property not only offers a home but a lifestyle of comfort, convenience, and enjoyment in a beautiful and inclusive community setting. Whether you are looking for a serene place to call home or an inviting space to entertain, 31680 Grenache Ct is poised to meet all your needs.

Built in 2007

Essential Information

MLS® #	DESU2065952
Price	\$589,000
Bedrooms	3
Bathrooms	3.00
Full Baths	3
Square Footage	2,400
Acres	0.00
Year Built	2007
Type	Single Family
Sub-Type	Detached
Style	Rancher, Contemporary, Loft with Bedrooms
Status	Active Under Contract
Tax Year	2023
Annual Tax Amount	\$1,637

Community Information

Address	31680 Grenache Ct #46
Area	Lewes Rehoboth Hundred (31009)
Subdivision	NASSAU GROVE
City	Lewes
County	SUSSEX-DE
State	DE
Zip Code	19958

Sussex Delaware Quadrant Between Rt 1 & 113

Amenities

Amenities	Pantry, Entry Lvl BR, CeilingFan(s), Built-Ins, Carpet, Master Bath(s), Recessed Lighting, Soaking Tub, Tub Shower, Walk-in Closet(s), Shades/Blinds, Wood Floors
Utilities	Cable TV Available, Phone Available, Sewer Available, Water Available, Propane - Community
Parking	Concrete Driveway, Lmt Comm Elem, Unassigned
# of Garages	2
Garages	Garage Door Opener, Garage - Front Entry
Has Pool	Yes

Interior

Interior Features	Floor Plan-Open
Appliances	Dishwasher, Disposal, Dryer - Electric, Icemaker, Refrigerator, Microwave, Oven/Range-Electric, Oven-Self Cleaning, Washer, Water Heater
Heating	Forced Air
Cooling	Central A/C
Fireplace	Yes
# of Fireplaces	1
Fireplaces	Gas/Propane
# of Stories	2
Stories	2 Story
Has Basement	Yes
Basement	Full, Sump Pump, Unfinished

Exterior

Exterior	Vinyl Siding
Exterior Features	Street Lights, Udrgrd Lwn Sprnklr, Porch(es), Porch-screened, Lawn Sprinkler
Lot Description	Cul-de-sac, Landscaping, Cleared
Windows	Screens
Roof	Architectural Shingle
Foundation	Concrete Perimeter

School Information

District	CAPE HENLOPEN
High	CAPE HENLOPEN

Additional Information

Date Listed	July 11th, 2024
Days on Market	5
Zoning	MR
HOA Fees	734.00
HOA Fees Freq.	Quarterly

Listing Details

Listing Office	Active Adults Realty
----------------	----------------------

©2024 BRIGHT, All Rights Reserved. Information deemed reliable but not guaranteed. The data relating to real estate for sale on this website appears in part through the BRIGHT Internet Data Exchange program, a voluntary cooperative exchange of property listing data between licensed real estate brokerage firms in which Long & Foster Bethany Beach participates, and is provided by BRIGHT through a licensing agreement. Real estate listings held by brokerage firms other than Long & Foster Bethany Beach are marked with the IDX logo and detailed information about each listing includes the name of the listing broker. The information provided by this website is for the personal, non-commercial use of consumers and may not be used for any purpose other than to identify prospective properties consumers may be interested in purchasing. Some properties which appear for sale on this website may no longer be available because they are under contract, have Closed or are no longer being offered for sale. Some real estate firms do not participate in IDX and their listings do not appear on this website. Some properties listed with participating firms do not appear on this website at the request of the seller.

Listing information last updated on July 22nd, 2024 at 3:16pm EDT