

\$899,900 - 33849 Joel Ln, Lewes

MLS® #DESU2064688

\$899,900

4 Bedroom, 3.50 Bathroom, 3,187 sqft
Residential on 0 Acres

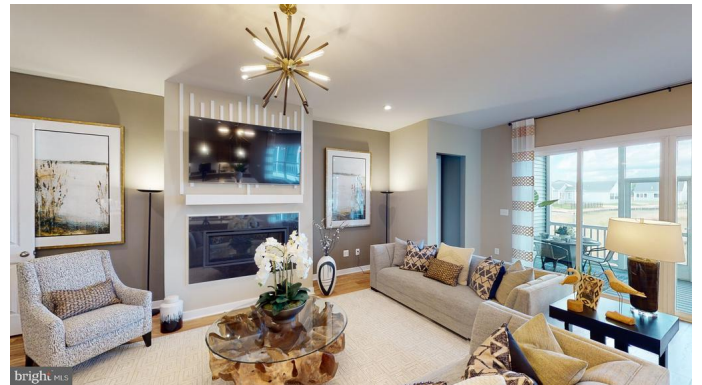
TOWER HILL, Lewes, DE

Welcome to the Lewes Loft home design. Estimated to be completed December 2024, the popular Lewes Loft model features a combination of open living space paired with traditional elements. This home features 4 bedrooms, 3.5 baths and a 2 car garage. Structural Features added to this home include a great room fireplace and an ultra spa bath in the primary suite. To schedule a tour please and to receive a full brochure of all features in this home please contact our sales representatives. Have you heard of Tower Hill? K. Hovnanian proudly presents this community of luxury single family homes located on the East side of Route 1, a short bike ride to downtown Lewes, and within close proximity to the Lewes-Georgetown Bike Trail. The community will also offer upscale amenities such as a pool, clubhouse, fitness center, pickleball courts, community garden, lawn games as well as outdoor paths and common areas throughout. Tower Hill will also feature access to the Freeman Institute - a series of life-enrichment classes for homeowners covering a wide variety of special interest topics.

Built in 2024

Essential Information

MLS® #	DESU2064688
Price	\$899,900



Bedrooms	4
Bathrooms	3.50
Full Baths	3
Half Baths	1
Square Footage	3,187
Acres	0.17
Year Built	2024
Type	Residential
Sub-Type	Detached
Style	Rancher
Status	Active

Community Information

Address	33849 Joel Ln
Area	Lewes Rehoboth Hundred (31009)
Subdivision	TOWER HILL
City	Lewes
County	SUSSEX-DE
State	DE
Zip Code	19958
Sussex Delaware Quadrant	East of Rt 1

Amenities

Has Pool	Yes
----------	-----

Interior

Heating	90% Forced Air
Cooling	Central A/C
# of Stories	2
Stories	2 Story

Exterior

Foundation	Crawl Space
------------	-------------

School Information

District	CAPE HENLOPEN
----------	---------------

Additional Information

Date Listed	June 17th, 2024
-------------	-----------------

Days on Market	17
Zoning	RESIDENTIAL
HOA Fees	270.00
HOA Fees Freq.	Monthly

Listing Details

Listing Office Delaware Homes Inc

©2024 BRIGHT, All Rights Reserved. Information deemed reliable but not guaranteed. The data relating to real estate for sale on this website appears in part through the BRIGHT Internet Data Exchange program, a voluntary cooperative exchange of property listing data between licensed real estate brokerage firms in which Long & Foster Bethany Beach participates, and is provided by BRIGHT through a licensing agreement. Real estate listings held by brokerage firms other than Long & Foster Bethany Beach are marked with the IDX logo and detailed information about each listing includes the name of the listing broker. The information provided by this website is for the personal, non-commercial use of consumers and may not be used for any purpose other than to identify prospective properties consumers may be interested in purchasing. Some properties which appear for sale on this website may no longer be available because they are under contract, have Closed or are no longer being offered for sale. Some real estate firms do not participate in IDX and their listings do not appear on this website. Some properties listed with participating firms do not appear on this website at the request of the seller.

Listing information last updated on July 3rd, 2024 at 7:30am EDT