

\$684,255 - 23583 Pier View #623, Frankford

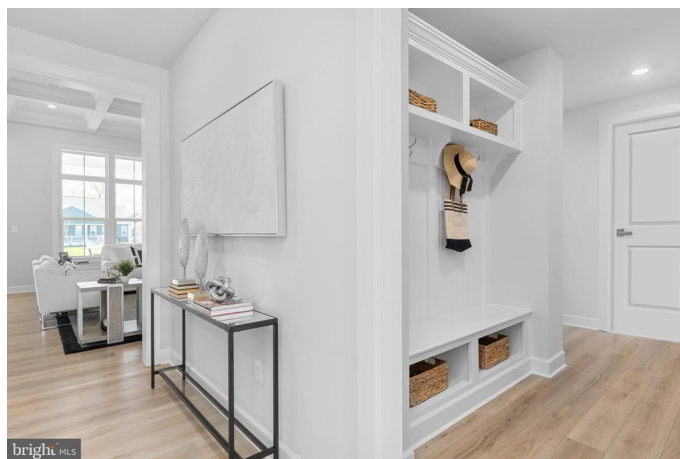
MLS® #DESU2062574

\$684,255

3 Bedroom, 2.50 Bathroom, 2,533 sqft
Residential on 0 Acres

THE ESTUARY, Frankford, DE

Just released- New, Ranch-style Model with Covered Porch, Outdoor Fireplace, and sparkling pond view! Welcome to the to-be-built Kingston at the Estuary. The Kingston features LUXURY one-level living with three bedrooms, study, AND additional storage throughout – even in the oversized 2 car garage. This home design has a charming exterior elevation with front porch, a formal foyer to greet guests, and a family entry with dedicated arrival center to keep things organized. The large kitchen and dining area have 10’™ ceilings and are open to the family room, which features 12’™ ceilings and an included coffered ceiling for that added touch of charm. These spaces are designed to allow natural light to stream through a breathtaking wall of windows in the dining and family room. Stepping outside, you can enjoy incredible outdoor living with the included covered porch with beautiful pond views. Turn on the outdoor fireplace to enjoy dining al fresco! The Estuary is the Best value for new homes in amenity-filled community, surrounded by the Assawoman Wildlife Preserve, 8 minutes to Bethany. Photos are representative. Our models are open by appointment, schedule your visit today!



Built in 2024

Essential Information

MLS® #

DESU2062574

| | |
|----------------|-------------|
| Price | \$684,255 |
| Bedrooms | 3 |
| Bathrooms | 2.50 |
| Full Baths | 2 |
| Half Baths | 1 |
| Square Footage | 2,533 |
| Acres | 0.25 |
| Year Built | 2024 |
| Type | Residential |
| Sub-Type | Detached |
| Style | Coastal |
| Status | Active |

Community Information

| | |
|---|---------------------------|
| Address | 23583 Pier View #623 |
| Area | Baltimore Hundred (31001) |
| Subdivision | THE ESTUARY |
| City | Frankford |
| County | SUSSEX-DE |
| State | DE |
| Zip Code | 19945 |
| Sussex Delaware Quadrant Between Rt 1 & 113 | |

Amenities

| | |
|--------------|---|
| # of Garages | 4 |
| Garages | Garage - Front Entry, Inside Access, Garage Door Opener |
| Has Pool | Yes |

Interior

| | |
|--------------|-------------|
| Heating | Forced Air |
| Cooling | Central A/C |
| # of Stories | 2 |
| Stories | 2 Story |

Exterior

| | |
|------------|--------------------|
| Roof | Asphalt |
| Foundation | Concrete Perimeter |

School Information

District INDIAN RIVER

Additional Information

Date Listed May 16th, 2024

Days on Market 49

Zoning RESIDENTIAL

HOA Fees 275.00

HOA Fees Freq. Monthly

Listing Details

Listing Office NVR Services, Inc.

©2024 BRIGHT, All Rights Reserved. Information deemed reliable but not guaranteed. The data relating to real estate for sale on this website appears in part through the BRIGHT Internet Data Exchange program, a voluntary cooperative exchange of property listing data between licensed real estate brokerage firms in which Long & Foster Bethany Beach participates, and is provided by BRIGHT through a licensing agreement. Real estate listings held by brokerage firms other than Long & Foster Bethany Beach are marked with the IDX logo and detailed information about each listing includes the name of the listing broker. The information provided by this website is for the personal, non-commercial use of consumers and may not be used for any purpose other than to identify prospective properties consumers may be interested in purchasing. Some properties which appear for sale on this website may no longer be available because they are under contract, have Closed or are no longer being offered for sale. Some real estate firms do not participate in IDX and their listings do not appear on this website. Some properties listed with participating firms do not appear on this website at the request of the seller.

Listing information last updated on July 3rd, 2024 at 3:30am EDT