

\$379,900 - 33955 Middleton Cir #7, Lewes

MLS® #DESU2057582

\$379,900

3 Bedroom, 2.00 Bathroom, 1,550 sqft
Condo/Townhome on 0 Acres

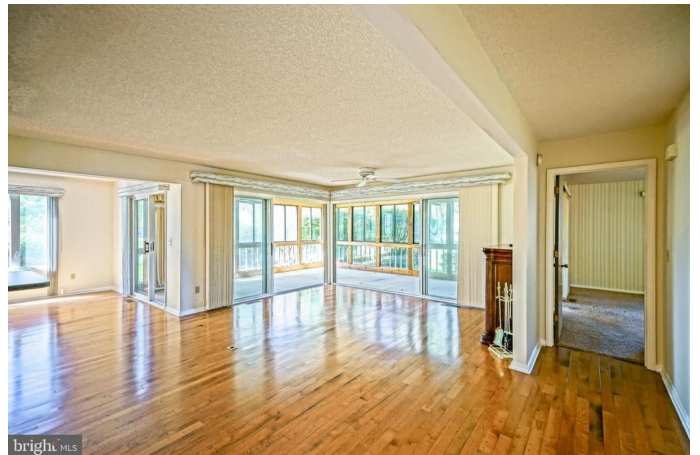
PLANTATIONS, Lewes, DE

SEIZE THE DAY and loads of convenience with this first-floor, 3 bedroom, 2 bath Plantations flat! Enjoy an easy, practically maintenance free, beach lifestyle with single-floor living. This unit includes a split bedroom floor plan with beautifully maintained hardwood flooring in the main living area, a private owner's suite with access to the sunroom - wonderful for sunlit mornings & golden-hour sunsets. The open living space includes a spacious & updated brand new kitchen opening into the living room that flows effortlessly to the dining room; PLUS a recently replaced HVAC! Great location between Lewes and Rehoboth Beaches where the fun, dining, shopping, and beaches within easy reach. Make it your getaway or ideal investment property. Call today!

Built in 1988

Essential Information

MLS® #	DESU2057582
Price	\$379,900
Bedrooms	3
Bathrooms	2.00
Full Baths	2
Square Footage	1,550
Acres	0.00
Year Built	1988
Type	Condo/Townhome



Sub-Type	Unit/Flat/Apartment, Garden 1 - 4 Floors
Style	Contemporary, Condo/Unit
Status	Active Under Contract
Tax Year	2023
Annual Tax Amount	\$1,207

Community Information

Address	33955 Middleton Cir #7
Area	Lewes Rehoboth Hundred (31009)
Subdivision	PLANTATIONS
City	Lewes
County	SUSSEX-DE
State	DE
Zip Code	19958
Sussex Delaware Quadrant	Between Rt 1 & 113

Amenities

Amenities	Entry Lvl BR, CeilingFan(s), Carpet, Master Bath(s), Recessed Lighting, Walk-in Closet(s), Wood Floors
Parking	Paved Parking
View	Garden/Lawn

Interior

Interior Features	Floor Plan-Open
Appliances	Dishwasher, Disposal, Dryer - Electric, Microwave, Oven/Range-Electric, Refrigerator, Washer, Water Heater
Heating	Heat Pump(s)
Cooling	Central A/C
# of Stories	1
Stories	1 Story

Exterior

Exterior	Cedar Siding
Exterior Features	Outbuilding Apartment, Porch(es)
Lot Description	Cleared, Landscaping
Windows	Insulated, Screens
Roof	Shingle, Wood
Foundation	Block, Crawl Space

School Information

District CAPE HENLOPEN

Additional Information

Date Listed May 1st, 2024

Days on Market 103

Zoning MR

HOA Fees 213.30

HOA Fees Freq. Quarterly

Listing Details

Listing Office Berkshire Hathaway HomeServices PenFed Realty

©2024 BRIGHT, All Rights Reserved. Information deemed reliable but not guaranteed. The data relating to real estate for sale on this website appears in part through the BRIGHT Internet Data Exchange program, a voluntary cooperative exchange of property listing data between licensed real estate brokerage firms in which Long & Foster Bethany Beach participates, and is provided by BRIGHT through a licensing agreement. Real estate listings held by brokerage firms other than Long & Foster Bethany Beach are marked with the IDX logo and detailed information about each listing includes the name of the listing broker. The information provided by this website is for the personal, non-commercial use of consumers and may not be used for any purpose other than to identify prospective properties consumers may be interested in purchasing. Some properties which appear for sale on this website may no longer be available because they are under contract, have Closed or are no longer being offered for sale. Some real estate firms do not participate in IDX and their listings do not appear on this website. Some properties listed with participating firms do not appear on this website at the request of the seller.

Listing information last updated on August 24th, 2024 at 4:16pm EDT