

\$1,699,999 - 6 N Edgewater House Rd #16n, Bethany Beach

MLS® #DESU2036834

\$1,699,999

3 Bedroom, 2.00 Bathroom, 1,750 sqft
Condo/Townhome on 0 Acres

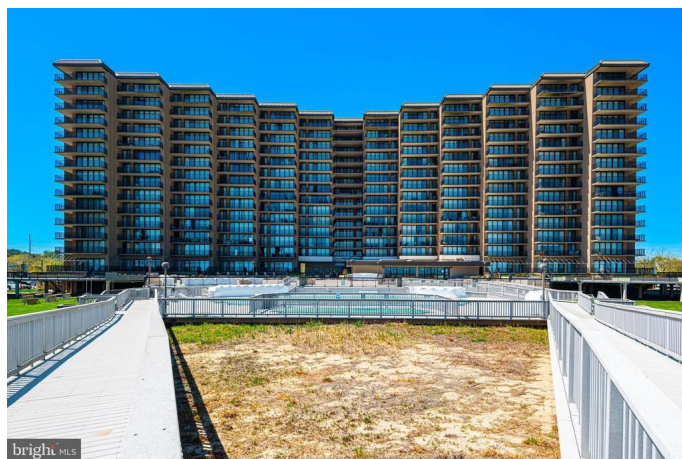
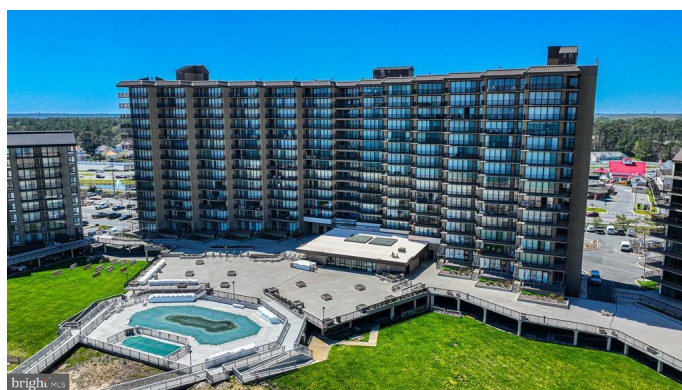
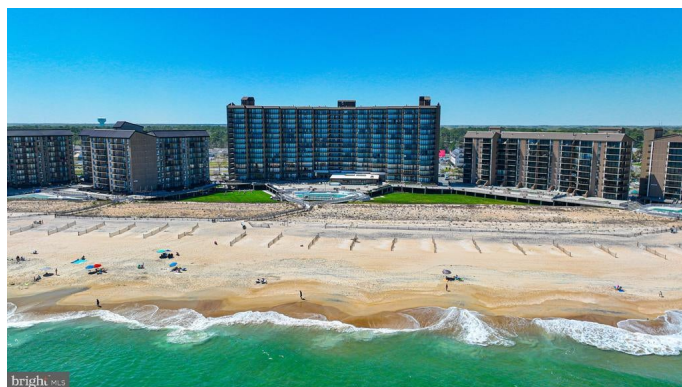
SEA COLONY EAST, Bethany Beach, DE

This unique 3 bedroom 2 full bath ocean front masterpiece will surely impress you. This rare ground floor main level unit is located in the bottom corner of the popular Edgewater House building. The unit has a extra large canopy covered wrap around patio that provides incredible views of the ocean, dunes and pool deck. New HVAC system. The unit offers a ton of indoor and outdoor space for living and entertaining and you never have to use the buildings elevator. Sea Colony places a sun cover over the patio just before Memorial Day. Walk the oceanfront promenade to 5 outdoor heated pools and separate kiddie pools. Prime location close to downtown Bethany Beach. World class amenities include a half-mile of lifeguarded private beach, Tennis with an indoor championship tennis center and outdoor tennis and pickle ball courts, huge fitness center, with indoor/outdoor lap pools. This amazing property could be yours just in time for summer! Come see this fantastic unit for yourself and take advantage of this wonderful opportunity to live ocean front at the beach.

Built in 1975

Essential Information

MLS® #	DESU2036834
Price	\$1,699,999
Bedrooms	3



Bathrooms	2.00
Full Baths	2
Square Footage	1,750
Acres	0.00
Year Built	1975
Type	Condo/Townhome
Sub-Type	Condo, Penthouse Unit/Flat/Apartment, Hi-Rise 9+ Floors
Style	Condo/Unit
Status	Active
Tax Year	2023
Annual Tax Amount	\$1,514

Community Information

Address	6 N Edgewater House Rd #16n
Area	Baltimore Hundred (31001)
Subdivision	SEA COLONY EAST
City	Bethany Beach
County	SUSSEX-DE
State	DE
Zip Code	19930
Sussex Delaware Quadrant	East of Rt 1

Amenities

Amenities	Built-Ins, Carpet, Elevator, Entry Lvl BR, Pantry, Tub Shower, Wet Bar/Bar, Shades/Blinds, Recessed Lighting
Utilities	Electric Available, Sewer Available, Water Available, Cable TV
Parking Spaces	1
Parking	Assigned, Handicap Parking, Paved Parking
View	Water, Ocean
Is Waterfront	Yes
Waterfront	Ocean
Has Pool	Yes

Interior

Interior Features	Floor Plan-Traditional
Appliances	Dishwasher, Disposal, Dryer, Icemaker, Microwave, Oven/Range-Electric, Washer
Heating	90% Forced Air
Cooling	Central A/C

# of Stories	1
Stories	1 Story

Exterior

Exterior	Concrete/Block
Exterior Features	Exterior Lighting, Secure Storage, Sidewalks, Tennis Court(s), Deck(s), Balcony, Private Beach
Roof	Metal

School Information

District	INDIAN RIVER
----------	--------------

Additional Information

Date Listed	May 1st, 2023
Days on Market	449
Zoning	AR-1

Listing Details

Listing Office	RE/MAX Town Center
----------------	--------------------

©2024 BRIGHT, All Rights Reserved. Information deemed reliable but not guaranteed. The data relating to real estate for sale on this website appears in part through the BRIGHT Internet Data Exchange program, a voluntary cooperative exchange of property listing data between licensed real estate brokerage firms in which Long & Foster Bethany Beach participates, and is provided by BRIGHT through a licensing agreement. Real estate listings held by brokerage firms other than Long & Foster Bethany Beach are marked with the IDX logo and detailed information about each listing includes the name of the listing broker. The information provided by this website is for the personal, non-commercial use of consumers and may not be used for any purpose other than to identify prospective properties consumers may be interested in purchasing. Some properties which appear for sale on this website may no longer be available because they are under contract, have Closed or are no longer being offered for sale. Some real estate firms do not participate in IDX and their listings do not appear on this website. Some properties listed with participating firms do not appear on this website at the request of the seller.

Listing information last updated on July 22nd, 2024 at 3:15am EDT