

\$588,000 - 30543 Ebbtide Pass, Frankford

MLS® #DESU2052262

\$588,000

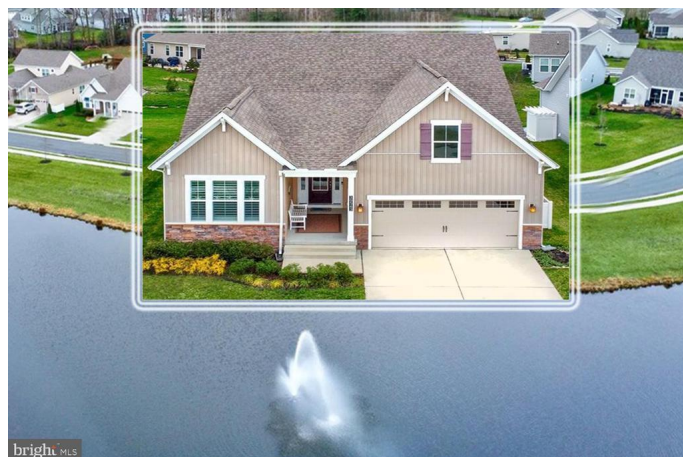
4 Bedroom, 3.00 Bathroom, 2,508 sqft
Residential on 0 Acres

THE ESTUARY, Frankford, DE

***** MOTIVATED SELLER***GREAT OPPORTUNITY TO OWN IN THE ESTUARY! FRONT ROW POND VIEW HOME SHOWCASING A COASTAL LIFESTYLE- BOTH INDOORS & OUT! Newer community offering a wealth of amenities including social hub Clubhouse, fitness center, pool with huge patio surround, tennis/pickleball courts, miles of walking paths, and PRIME LOCATION BETWEEN BETHANY BEACH & FENWICK ISLAND! A seashore showcase of modern ceiling fan breezes, chic lighting, soothing ocean hues paint palette, and plantation shutters for ultimate privacy. Welcoming covered porch for morning coffee with unobstructed view of the scenic pond with soaring fountain. Free-flowing main level Living Room and Dining Room/Kitchen allowing integrated conversation & entertaining! Stainless/granite Kitchen with island dining bar. Screened Sunporch spilling out to paver picnic patio backing to manicured open green space! Main level Laundry. Envidable Primary Bedroom Suite with luxe Bath & full-room walk-in closet. 2 Additional bright & airy main level Bedrooms; Family Bath. Unique upper level including family/office area, and BR/BA. Possible In-Law Suite! BASK IN THE BEST OF DELAWARE COASTAL LIVING!**

Built in 2017

Essential Information



MLS® #	DESU2052262
Price	\$588,000
Bedrooms	4
Bathrooms	3.00
Full Baths	3
Square Footage	2,508
Acres	0.17
Year Built	2017
Type	Residential
Sub-Type	Detached
Style	Coastal
Status	Closed

Community Information

Address	30543 Ebbtide Pass
Area	Baltimore Hundred (31001)
Subdivision	THE ESTUARY
City	Frankford
County	SUSSEX-DE
State	DE
Zip Code	19945
Sussex Delaware Quadrant Between Rt 1 & 113	

Amenities

Amenities	CeilingFan(s), Pantry
Utilities	Propane - Community
Parking	Concrete Driveway
# of Garages	2
Garages	Garage - Front Entry, Garage Door Opener
View	Pond
Has Pool	Yes

Interior

Interior Features	Floor Plan-Open
Appliances	Disposal, Dryer, Microwave, Oven/Range-Electric, Dishwasher, Stainless Steel Appliances, Refrigerator, Washer, Water Heater
Heating	Heat Pump - Electric BackUp
Cooling	Central A/C
# of Stories	2

Stories 2 Story

Exterior

Exterior Frame, Vinyl Siding

Exterior Features Udrgrd Lwn Sprnklr, Patio, Porch-screened, Porch(es)

Roof Architectural Shingle

Foundation Crawl Space

School Information

District INDIAN RIVER

Additional Information

Date Listed November 29th, 2023

Days on Market 22

Zoning AR-1

HOA Fees 825.00

HOA Fees Freq. Quarterly

Listing Details

Listing Office RE/MAX Realty Group Rehoboth

©2024 BRIGHT, All Rights Reserved. Information deemed reliable but not guaranteed. The data relating to real estate for sale on this website appears in part through the BRIGHT Internet Data Exchange program, a voluntary cooperative exchange of property listing data between licensed real estate brokerage firms in which Long & Foster Bethany Beach participates, and is provided by BRIGHT through a licensing agreement. Real estate listings held by brokerage firms other than Long & Foster Bethany Beach are marked with the IDX logo and detailed information about each listing includes the name of the listing broker. The information provided by this website is for the personal, non-commercial use of consumers and may not be used for any purpose other than to identify prospective properties consumers may be interested in purchasing. Some properties which appear for sale on this website may no longer be available because they are under contract, have Closed or are no longer being offered for sale. Some real estate firms do not participate in IDX and their listings do not appear on this website. Some properties listed with participating firms do not appear on this website at the request of the seller.

Listing information last updated on July 3rd, 2024 at 9:31am EDT